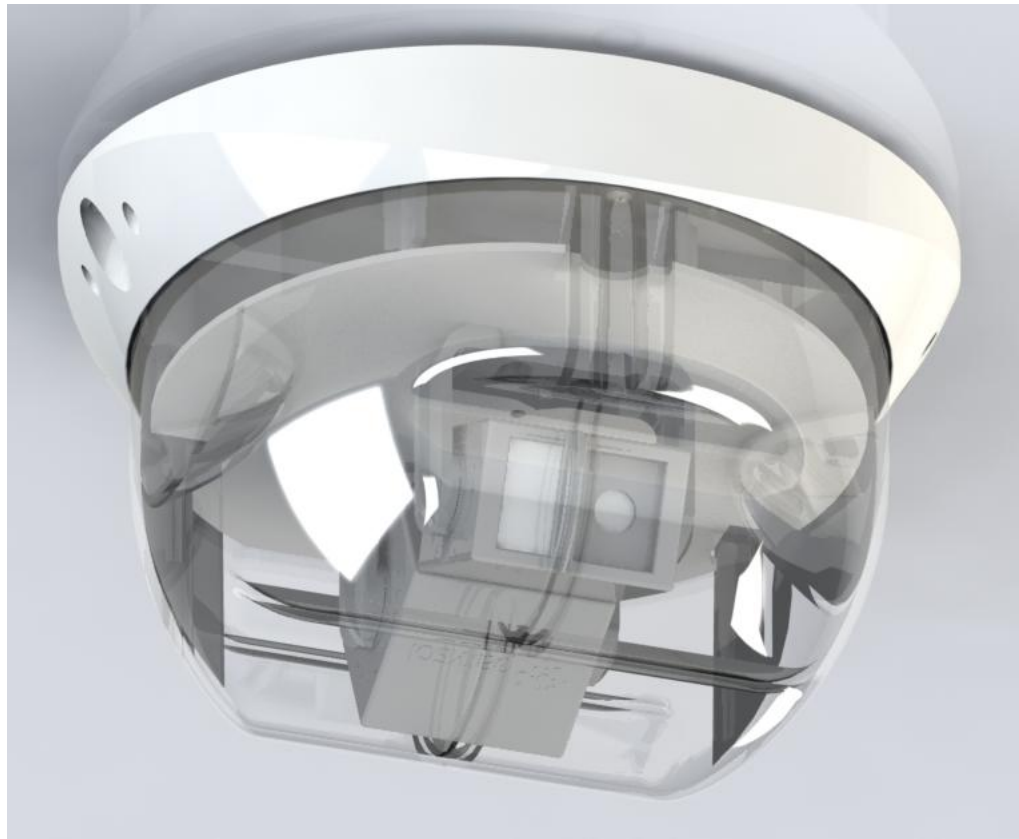


Technical Data Sheet

TOF Counter



1. Main features

- The cutting edge **Time-of-Flight** technology is used in Parksol **TOF** proximity sensor for vehicles detection. TOF technology enables to detect vehicles at very wide view angle, fast and reliably.
- Configurable on-board two semiconductor relays enables additional control capability for activating/deactivating barriers, gates, alarms and traffic signs.
- Standard MODBUS protocol via RS485 interface is used for communication with sensor.
- Most of configurations can also be done using Command Line Interface via micro-USB connection.
- Integrated temperature and relative humidity sensor.
- Adjustable timer with alarm indication for individual car parking slot.
- FreeRTOS real time operating system.

2. Description

Double sided counter can detect the direction of passing through vehicles, hence the counter value can be increased and decreased depending on direction detected. TOF Sensor AB version must be used only for this mode to operate. Horizontal mount is recommended, though any mounting position may be realised. Relay A will generate 100 ms pulse if A to B direction is detected and Relay B will generate 100 ms pulse if direction B to A is detected.

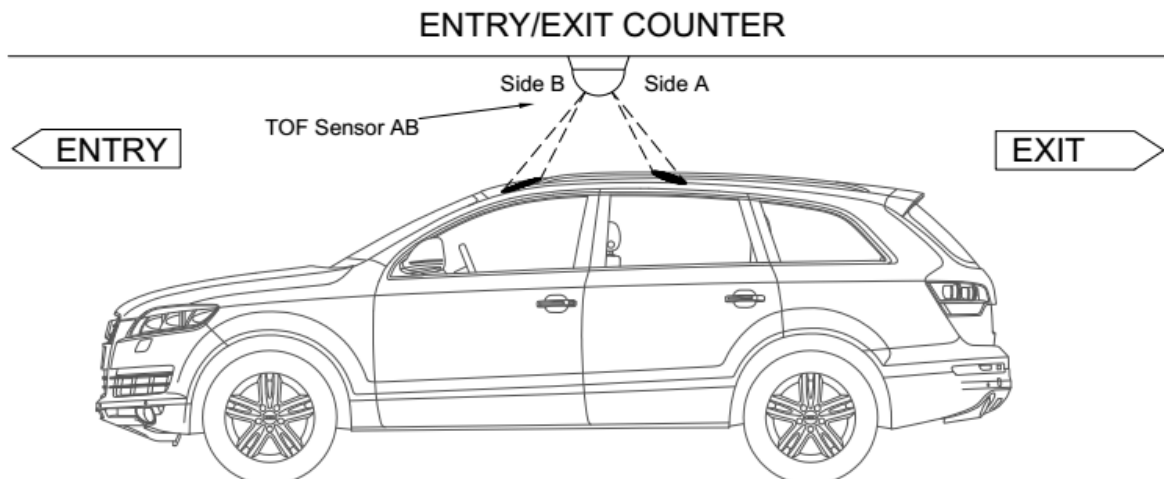


Fig. 1. Double Sided Barrier Counter horizontal mount.

3. Technical characteristics

3.1 Electrical characteristics

Power supply voltage	16 ... 48 V DC
Power supply current	30 mA RMS, 200 mA peak
Average power consumption	1.5 W at 48 V
Pulse power consumption	9.6 W at 48 V
Maximum pulse duration	2 x 230 ms
Relay output current	400 mA at 60 V max

3.2 Sensors typical characteristics

Detection method	10MHz modulated 810nm IR light
Field of view	1.2° full angle
Detection range	up to 5.5m (at 70 000 lx sunlight)

3.3 Interfaces

RS485	MODBUS protocol, XMODEM
USB 2.0	CLI terminal
3.3V logic UART	CLI terminal, debug monitor

3.4 Environment

Work temperature	-30°C ... +60°C
Storage temperature	-40°C ... +85°C
Humidity	up to 95% not condensing

3.5 Other

Housing type	IP66
Mounting method	Wall / channel mount with screws
Dimension (mm)	136 x 123 x 200
Weight	345 g
Housing colour	Grey / transparent